

What's New in Team Developer 6.2

Many new capabilities are coming with Team Developer 6.2. The new features are grouped by three areas, the IDE, new .NET features and other APIs and GUI features.

The TD 6.2 IDE

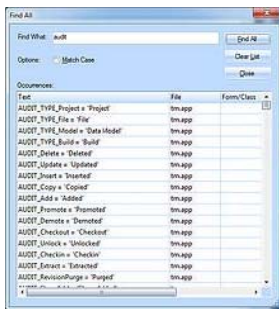


Using the IDE of Team Developer 6.2 is a joyful and highly productive experience.

Many new features make using Team Developer 6.2 a joyful experience. Quickly open any TD file, new Find All dialog. Quickly assign selected objects to a tab page. New Message properties to customize the IDE. Developers are going to love the Team Developer 6.2 IDE.

Quickly Open All TD Files

The File Open dialog is enhanced to support quick access to all TD files without having to select the exact TD file extension like app, apt, apl.

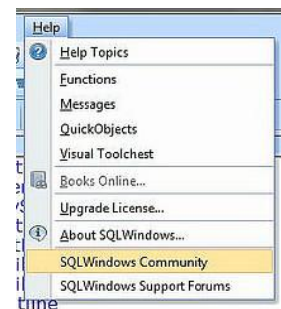


Find All Search Option

The new Find All search option let's you quickly find all occurrences of the search term in the outline. Quickly navigate to a single item by double-clicking on it in the search results list.

Quick Community and Support Access

Need a sample to learn a new feature? Grab it from the TD Community. Quick direct access to the Tech Support forums is now available.

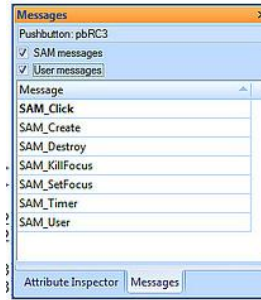


Easily Assign Objects to a Tab Page

Select multiple objects in the source outline, then from the right-click menu choose "Assign to Tab Page". This opens the assign to tab page dialog where you quickly assign the objects to a tab page of choice.

Customizable Attribute Inspector Messages Tab

The Attribute Inspector messages tab can be configured to display system messages, user messages or both. You set your IDE environment to your specific requirements.



Other Enhancements

If you double-click in an object in layout mode, the opening outline view will have the message node expanded for quick code navigation.

TD 6.2 automatically cleans up the temporary directories used for .NET compilation.

.NET and APIs

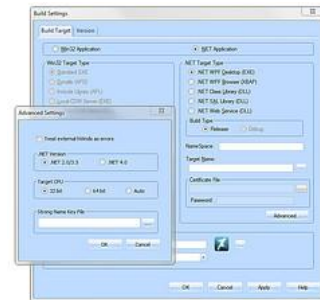


64-bit .NET Apps - 360° .NET Debugging, Custom Exceptions and a lot more

.NET debugging and deployment power, enhanced exception handling and many new useful APIs make Team Developer 6.2 a profound feature release for powerful 64-bit deployment and Web Services debugging for three-tier application development and deployment.

Deploy 64-bit .NET Apps

Build and deploy powerful business solutions using the new 64-bit compile option. Interact with 64-bit database drivers and other 64-bit solutions. Team Developer helps you to remain at the edge of new technologies.



360° .NET Debugging

Team Developer 6.2 offers a great .NET app debugging experience. Debug any aspect of your .NET application. Debug .NET Class Libraries written using Team Developer, debug TD .NET Web Services provider, debug TD apps that include C# assemblies, including stepping through C# code. Debug TD.NET assemblies from within Visual Studio.

Custom .NET Exceptions

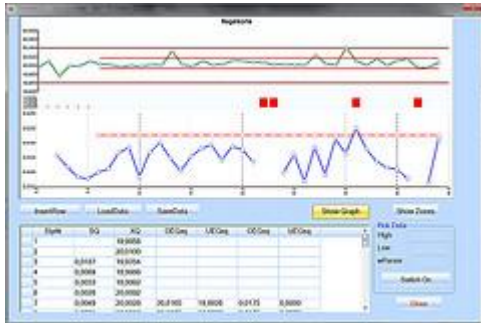
Define and throw your own custom .NET exceptions for advanced app error management. Win32 apps that call .NET classes receive .NET exceptions in case the calling class throws an exception.

```

+ Named Exceptions
+ Exception: eTerribleThingHasHappened
+ Description:
+ Exception Variables
+ String: sMessage (Auto-generated, do not remove)
+ String: sMoreMessage
+ Where It Happens
+ If LastException = eTerribleThingHasHappened
+ Call: GetCustomExceptionFromSourceName, sException, sExceptionMessage, sStackTrace
+ Set: sAdditionalExceptionText = sAdditionalExceptionFromSourceName, sMoreMessage
+ Call: GetCustomExceptionFromSourceName, sException
+ Additional Message: [ sAdditionalExceptionText, sExceptionMessage, ME_08_3 ]
+ Throw: eTerribleThingHasHappened, "Terrible things have happened", but we took care of them."
    
```


Dialog Dock Hosts

With Team Developer 6.2 you can dock child windows to a dialog window, just like you could with form windows before. This allows for example to always provide the user with the same toolbars throughout your application, no matter if users are presented with a form window or a dialog box.



Charting Control

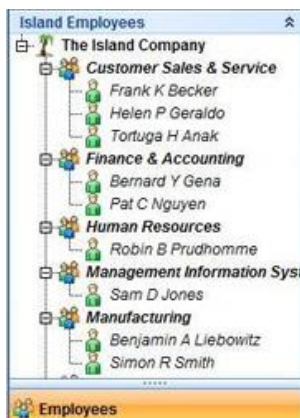
The Charting Control has been enhanced to support watermark images and to support multiple charts in one control that share a common x-axis.



Grid Control Save State

Application users can customize their view of grid controls by grouping multiple columns and adding sort orders. TD 6.2 can save the customized settings to an XML-file and load customized grid settings from an XML-file. Programmers such can save the state of a users grid settings and the next time the user uses that grid, the app can load the previous settings and present the user with their latest grid customization.

Name	Address	City	State
John Doe	123 Main St	New York	NY
Jane Smith	456 Elm St	Los Angeles	CA
Bob Johnson	789 Oak St	Chicago	IL
Alice Brown	101 Pine St	San Francisco	CA
Charlie White	202 Cedar St	Houston	TX
Diana Green	303 Birch St	Phoenix	AZ
Frank Black	404 Maple St	Philadelphia	PA
Grace King	505 Walnut St	San Diego	CA
Henry Lee	606 Spruce St	Portland	OR
Ivy Hill	707 Ash St	Seattle	WA
Jack King	808 Hickory St	Denver	CO
Karen White	909 Sycamore St	San Jose	CA
Leo Green	1010 Dogwood St	San Antonio	TX
Mia Black	1111 Redwood St	San Jose	CA
Noah White	1212 Magnolia St	San Jose	CA
Olivia Black	1313 Cypress St	San Jose	CA
Paul White	1414 Juniper St	San Jose	CA
Quinn Black	1515 Fir St	San Jose	CA
Rachel White	1616 Hemlock St	San Jose	CA
Sam Black	1717 Spruce St	San Jose	CA
Tina White	1818 Cedar St	San Jose	CA
Uma Black	1919 Birch St	San Jose	CA
Victor White	2020 Pine St	San Jose	CA
Wendy Black	2121 Oak St	San Jose	CA
Xavier White	2222 Elm St	San Jose	CA
Yara Black	2323 Maple St	San Jose	CA
Zoe White	2424 Walnut St	San Jose	CA



Tree Control Enhancements

The APIs of the tree control have been enhanced with the following new functions. A function to change the parent of a tree item. This allows to move entire tree branches to a new parent tree item. A new function that selects a tree item based on it's data id (primary key). And a new function to set a tree item image from a binary variable.

DateTime Picker Enhancements

The DateTime Picker has received a number of new useful properties. These include the ability to show the week number, to show the today button, to show the none button, to show non month days and the ability to use a date picture.



Other Enhancements

Other enhancements include a property to set themed mdi backgrounds to on and spell checking for .NET editable controls.



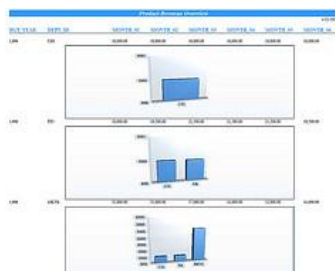
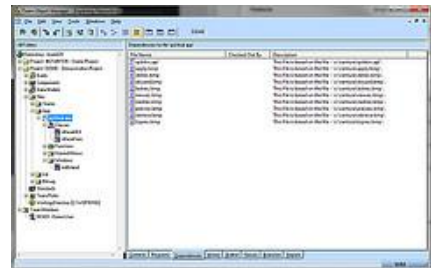
More



Team Object Manager and Report Builder

Team Object Manager Uses Modern TD 6.2 GUI

Team Object Manager has been moved to a TD 6.2 codebase and such comes with the new attractive TD themed look & feel. Goodbye battleship grey!



Report Builder 6.2

Report Builder 6.2 has been updated with the new Charting Control that was made available in TD 6.1. Create stunning reports that include attractive 2-d and 3-d business charts. The Report Builder charting control offers a host of properties to customize the charts that are going to be printed with a report.

