

TD Mobile

Mobile Business Apps

Platform Independent

Display Size Independent

Internationalization Ready

Easy Independent Deployment

Gupta Technologies, 25+ years experience in building software development tools and databases.

HEADQUARTERS

1420 Rocky Ridge Drive, Suite 380
Roseville, CA 95661 U.S.A.
Tel: +1 916.218.4700
Email: info@guptatechnologies.com

GERMANY

Tel: +49 89 208039 158
Email: infode@guptatechnologies.com

UNITED KINGDOM

Tel: +44 0 1753 245 510
Email: infouk@guptatechnologies.com

FRANCE

Tel: +33 1 34 58 28 30
Email: infofr@guptatechnologies.com

AUSTRALIA

Tel: +61 402 208254
Email: asiapacinfo@guptatechnologies.com

BRAZIL

Tel: +55 11 2344 1856
Email: infobr@guptatechnologies.com

Mobile Business Apps

At Gupta Technologies we strongly believe in simplification. Software technology only makes sense for software developers and software users if their work processes are being simplified and dull repeating tasks are being automated, allowing people to concentrate on their creativity and productivity in their work life.

This is why we invented the “One App For All Approach” for TD Mobile.

Looking at the vastly heterogenous development processes required to deliver mobile business apps for a wide range of mobile devices like smartphones and tablets, we thought it is time for simplification.

Display Size Independent Apps

With TD Mobile you write one app that includes “looks” for all the display sizes you like to support. Because not all smartphones and tablets share one common size. TD Mobile features lookless pages allowing developers to provide multiple looks per page.

PC Browser Apps

TD Mobile Apps do run in a PC browser on Windows, Mac, Linux etc.

Platform Independent Apps

TD Mobile apps do not rely on vendor specific operating systems or other vendor specific technology. Using TD Mobile for mobile business app development does not require separate software development teams for every mobile platform like iOS, Android and others.

With TD Mobile you have one team that builds all your mobile apps and the apps do run on all mobile devices.

Your app will use the device specific GUI theme when it is being rendered on a display. On iOS apps look like iOS apps, on Android, apps look like Android apps.

Easy App Deployment

You deploy your apps on one or more centralized cloud servers, no need to go through vendor app stores.

App updates are effective immediate on all user devices. No local app upgrade process on user devices required at all.

Users simply open an app URL to start using the app.

TD Mobile includes a publishing wizard that deploys the frontend and backend parts of the application to an IIS Web server.

Internationalization Ready

Build your apps having multi-language support from the beginning. TD Mobile allows to define multiple app languages and can contain the string resources for all the defined languages.

At runtime the app decides on the GUI language based on the locale of the executing mobile device.

Coming Soon

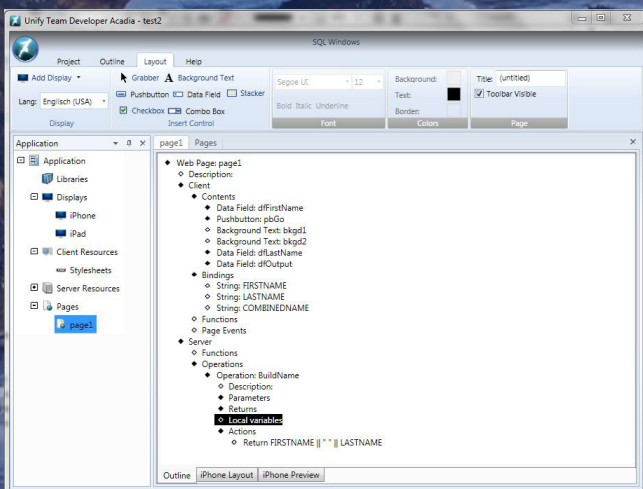
TD Mobile is scheduled to release in fall 2013.

TD Mobile Technology

TD Mobile builds HTML5/JavaScript apps for the frontend. The backend processing technology is based on .NET JSON Web Services. TD Mobile lets you easily build the GUI and backend of your application from one integrated IDE.

The TD Mobile SAL programming language allows for lightning fast development and powerful database and Web Service integration.

TD Mobile apps are hosted on IIS Web Servers.



Gupta Technologies, 25+ years experience in building software development tools and databases.

HEADQUARTERS

1420 Rocky Ridge Drive, Suite 380
Roseville, CA 95661 U.S.A.
Tel: +1 916.218.4700
Email: info@guptatechnologies.com

UNITED KINGDOM
Tel: +44 0 1753 245 510
Email: info@guptatechnologies.com

AUSTRALIA
Tel: +61 402 208254
Email: asiapacinfo@guptatechnologies.com

GERMANY
Tel: +49 89 208039 158
Email: info@guptatechnologies.com

FRANCE
Tel: +33 1 34 58 28 30
Email: info@guptatechnologies.com

BRAZIL
Tel: +55 11 2344 1856
Email: info@guptatechnologies.com