

OpenText Gupta Team Developer

Release Notes

7.4

Product Released: 2021-07-15

Release Notes Revised: 2021-06-18

Contents

1	Introduction	3
1.1	Release Notes revision history	3
2	About Gupta Team Developer.....	3
2.1	New features.....	3
2.1.1	IDE new features	3
2.1.2	SAL API	4
2.1.3	SAL Language	7
2.1.4	User Experience - UX.....	8
2.1.5	Report Builder.....	9
2.1.6	Messaging - Events	9
2.2	Discontinued and deprecated features.....	10
3	Packaging and documentation.....	10
3.1	Packaging and delivery information	10
3.2	Related documentation.....	11
4	Supported environments and compatibility.....	11
4.1	Supported systems.....	11
4.2	OpenText product compatibility	12
4.3	Language support.....	13
5	Fixed issues.....	15
6	Contact information	24

1 Introduction

These Release Notes provide an overview of Gupta Team Developer 7.4, including new features, delivery information, and supported platforms. OpenText recommends that you read these Release Notes in conjunction with the documentation included with the software package. If any conflicts exist, the Release Notes supersede the other documentation.

We also recommend that you check OpenText My Support (<https://support.opentext.com>) for any patches or documentation updates that may have been posted after the initial release of this product.

1.1 Release Notes revision history

Revision date	Sections revised	Description of revisions
2021-06-18	First release.	All new content.

2 About Gupta Team Developer

Team Developer 7.4 includes many reporting enhancements like up-to 16 break-groups, duplex printing, and PDF printing. Several language improvements increase developer productivity like ForEach loops. Window zooming provides a way to enlarge the contents of a window to adopt for very high-resolution displays. Plus, many other enhancements.

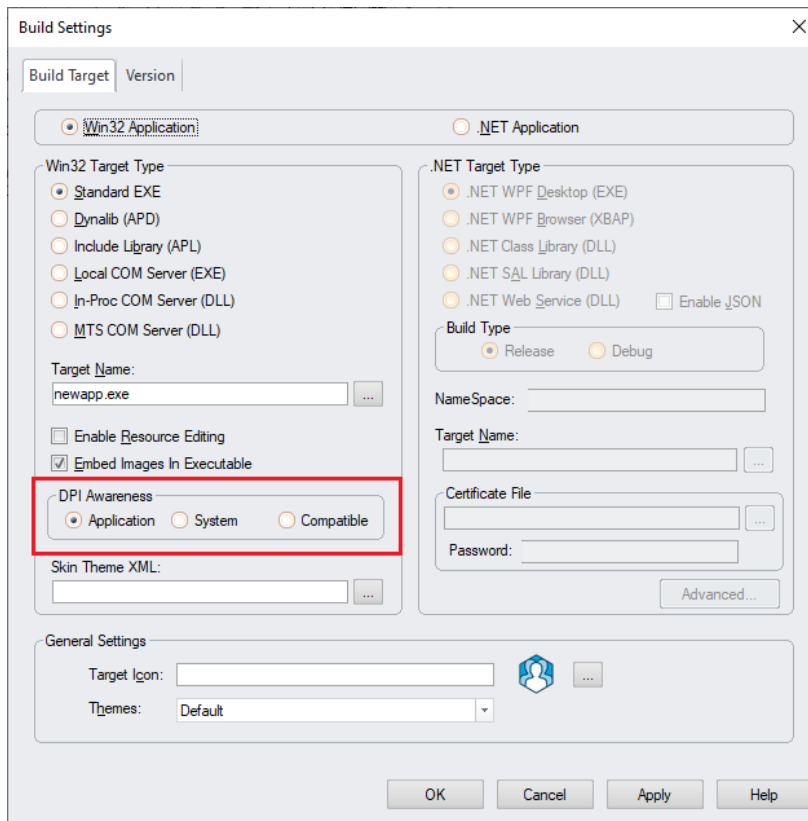
2.1 New features

Gupta Team Developer 7.4 includes the following new features.

2.1.1 IDE new features

- Build Settings for Win32 Application now has the option, DPI Awareness, to disable DPI awareness (System) or keep backward compatibility with pre-TD 7.0 release (Compatible) for standard executable. Windows automatically enlarge application based on current display scaling if this option is Application.

This is equivalent with setting "Disable_DPI_Awareness" custom version string to "YES" for System or "OLD" for Compatible.



- The Create Installer dialog is now enabled when the project target is Win32. An additional folder may be specified as a source for extra deployment files for both .NET and win32/x64 targets.
- The Git source control dialog now has a plus (+) button to create a new branch, and a dialog for selecting the source branch and new branch name.
- New option for FindAll dialog to search current view only.
- Added more search options to the Find All dialog.
 - Find Whole Words Only
 - Exclude Comments
 - Exclude Include Libraries
 - Results to Output Window

2.1.2 SAL API

- **Calendar control**
 - Boolean SalCalSetSelectedDates(hWnd, dtArr)

Set the selected dates for a date picker control from a Date/Time array.

hWnd - Window Handle. Name or handle of date picker control.

dtArr - Array containing dates to be selected in the date picker control.

- **Control Anchoring**

- Boolean SalAnchorIsEnabled(hWnd)

Returns whether anchoring is enabled if hWnd is a form, form toolbar, dialog box, tabbar, or navigation bar; otherwise, returns false.

- Boolean SalAnchorGet(hWnd, nHorzAnchor, nVertAnchor)

Gets the horizontal and vertical anchor properties for the given hWnd. Returns TRUE if the properties exist, otherwise FALSE.

- Boolean SalAnchorChildInitScaling(hWndChild, bInitHorz , bInitVert)

Initializes the horizontal and vertical scale factors so that the control width or height maintains the same ratio to its parent container when resizing. Scaling is ignored when the child is anchored as "BOTH". When anchoring is set to "NONE", the control maintains its position relative to its parent as well as scaling its width or height.

Returns FALSE if the control does not support anchoring.

hWndChild - Window Handle. The handle (or name) of a window.

bInitHorz - Boolean. Whether to initialize horizontal scaling, FALSE disables.

bInitVert - Boolean. Whether to initialize vertical scaling, FALSE disables.

- SalTblSetTableFlags(): Added new table flag, TBL_Flag_ColSizeProportional, that allows proportionally spaced columns. When set to TRUE, all visible columns are the same width and spaced evenly within the grid or table, except for columns of type checkbox, radio button, or button. which retain their original widths.

- **Date time**

- New SAL functions, SalDateAddDay and SalDateMonthEnd, are added. These are equivalent functions with DateAddDay and DateMonthEnd Report Builder formula.

- **Grid control, table window**

- nRowCount = TblQueryRowCount(hWndTbl)

Returns the number of rows in a table or grid. This may cause all rows to be fetched, depending on the database.

hWndTbl - Window Handle. The handle (or name) of a table window or grid.

- SalGridDataExportEx() now set column width when exporting to Excel. You can also set column width and row height to fit its contents by specifying EXPORT_AutoFitColumns and/or EXPORT_AutoFitRows flag.
- Boolean SalTblSwapRows(hWndTbl, nRow1, nRow2)

Swaps the position of one row with another in a table or grid.

hWndTbl - Window Handle. The handle (or name) of a table window or grid.

nRow1 - Number. The row number of first row to swap.

nRow2 - Number. The row number of second row to swap.

- **MDI Windows**

- The background image for the MDI windows can now be set using SalPicSetBinary, SalPicSetString, and SalPicSetImage using the value returned for a picture control by SalPicGetBinary, SalPicGetString, and SalPicGetImage respectively. SalPicSetHandle can now also be used to set the MDI background using a bitmap handle loaded from a dll.

The background image can be cleared by passing STRING_Null to SalPicSetString, BINARY_Null to SalPicSetBinary, 0 to SalPicSetHandle, or by calling SalPicClear.

For PNG format images, specify PIC_FormatPNG with SalPicGet/SetBinary and SalPicGet/SetString, or use SalPicGet/SetImage. For GIF or JPG format, specify PIC_FormatObject, or use SalPicGet/SetImage.

- **Menus**

- SalMenuDelete() now allows deleting menu items that are defined in the outline.
- Added SalScrollEnableCtxMenu() to enable or disable the context menu for descendant scroll bars.
- Added SalMenuSetStatusText, SalMenuSetTipText, SalMenuGetStatusText, SalMenuGetTipText.

- **Notifications**

- SalNotifyShowToast() can use a resource icon for the first parameter. Before only a file name was possible.
- SalNotifyClearToasts() is added to clear toast notifications shown in Action Center.

- **Printing**

- You can now specify RPT_PrintToPrinter option to nOptions argument for SalReportPrintToFile and SalReportPrintToFileEx to send the generated PDF to the default printer.
- New print options, RPT_PrintDupVertical and RPT_PrintDupHorizontal, are added for SalReportPrint function to support duplex printing. You can specify either one with other print option such as RPT_PrintRange. If physical printer does not support duplex printing this duplex printing option will be ignored.

- **REST JSON**

- SalJSON class library (SalJSON.apl) is now available to support more functionalities relating JSON and REST API for example to set timeout for each request:
config.set_timeout(std::chrono::seconds(30));

- **Ribbon bar**

- Added SalRibbonAddItemEx and SalRibbonSetItemImageEx.
- SalRibbonAddItemEx allows the user to dynamically create items on a ribbon bar using picture binary or string for the item image. Instead of the final item resource argument of SalRibbonAddItem, it uses an argument that may be a string or binary variable, and a numeric argument to indicate the image type contained in the string or binary variable, or whether to load the image from a filename specified by the string variable.

- SalRibbonSetItemImageEx displays a picture in a ribbon item from binary or file, or from a specified filename. Similar to SalRibbonAddItemEx, a string or binary variable is passed, as well as a numeric argument to indicate the image type.

The values for the image string or binary variable and the image type may be obtained by calling SalPicGetImage. If the string variable specifies a filename, then the image type should be specified as PIC_FormatFromFile.

- **Rich text control**
 - Added SalRTFSetReadOnly and SalRTFGetReadOnly.
- **Tab control**
 - Boolean SalTabPageHasChild(hWndPage, hWndChild)

Determines whether the given tab page contains the given control.

hWndPage - The handle of the tab page control. This may be obtained by SalTabGetPageWindow or SalGetFirstChild/SalGetNextChild.

hWndChild - The handle of the control to test if it is contained by the given page.

- Boolean SalTabsPageEnabled(hWnd, nPageIndex)

SalTabsPageEnabled determines whether a tab page is enabled.

hWnd - Window handle of the tab control.

nPageIndex - Number. Index of a tab page.

Returns TRUE is the page is enabled, otherwise FALSE.

- **User defined variables**
 - Boolean SalObjCopy(Reference objFrom, Reference objTo)

Added SalObjCopy, which allows copying the values of all instance variables from one UDV object to another. Both variables must be declared with the same functional class.

- **Visual Toolchest**
 - Added a new method to VT cListView, SetItemFont, that allows setting the font for an existing list view item when ViewDetails is used.
- **Window zooming**
 - New SAL function, SalZoomWindow, is added to zoom all TD windows. Another new SAL function, SalGetZoom, is also added to get current zoom scale.

2.1.3 SAL Language

- Added a new statement, ForEach, that executes a loop that assigns a variable from array elements in succession.

The ForEach statement has two variations:

- ForEach var in varArr
- ForEach var in varArr using nIdx

where the var variable and varArr array are of the same type, or an allowed UDV assignment.

The first form uses an internal index, which always starts at the first array index. This simpler form may be used in most situations, but cannot be used in recursive functions, and should be avoided in functions that can be called from both main and background threads. Both var and varArr must be declared somewhere within the application to be referenced by the ForEach statement.

The second form includes a 'using' clause that specifies an index declared as a local variable in the calling function. This form should be used in recursive functions and in functions that can be called from both the background thread and the main thread. The value of nIdx may be set by the developer before the ForEach statement to start the iteration at that index or set to less than or equal to the array minimum to start from the first element.

When the 'using' clause is specified, both var and nIdx should be declared as local variables in the calling function. The varArr array may be declared at any program scope.

- The new Continue statement causes the While or Loop statement to be executed but does not increment any loop variables.
- You can now rethrow an SQL error in a .NET DLL.

2.1.4 User Experience - UX

- **Control anchoring enhancements**
 - Control anchoring is now available for .NET applications.
 - Control anchoring is now available for tool bars.
 - Anchoring is now allowed for tab bars that have the "Tile to Parent" attribute set to Yes.
 - Added Anchor Maximum Width and Anchor Maximum Height attributes to container windows that have the Anchoring Enabled attribute. The Anchor Maximum Width and Height attributes cause the child controls in the container window to stop resizing and re-positioning when the container size exceeds the maximum, but do not prevent the resizing.
Forms and dialogs that have Anchoring Enabled set to Yes no longer have scrollbars added when the size is adjusted smaller.
- Added "RibbonBar Enabled" attribute to form window class, table window class, grid window class, and MDI window class.

The ribbon bar now follows the model used by menu bars: The menu bar used by a form at runtime is the first non-empty menu found when searching up the inheritance tree. This now also applies to ribbon bars.

- Rich text control added language specific ctrl-key accelerators for bold, italic and underline. The default accelerators:

ctrl+B Bold

ctrl+I Italic

ctrl+U Underline

German:

ctrl+F Bold

ctrl+K Italic

ctrl+U Underline

Spanish:

ctrl+N Bold

ctrl+I Italic

ctrl+S Underline

French:

ctrl+G Bold

ctrl+I Italic

ctrl+S Underline

- Prevent showing default tooltip (cell content string) when FALSE is returned from SAM_DisplayToolTip.
- Touch screen scrolling is improved.
- Enable vertical and horizontal scroll when RTC control is set to disabled.

2.1.5 Report Builder

o Report Builder now support break groups up to 16. Previously only 8 break groups are supported. If more than 8 break groups are defined saved Report Builder file cannot be opened by previous releases.

- Conditional display for picture controls is now available.
- PNG image transparency is honored in reports.
- Image EXIF data is respected for correct image rotation.

2.1.6 Messaging - Events

- Added a new SAM message to the rich text control, SAM_RTFPaste.

- wParam is 0 if the clipboard does not contain rich text formatted data, 1 if it does.

- lParam not used

Return value:

0 to cancel the operation.

1 to paste as plain text.

any other value to paste as RTF or default

2.2 Discontinued and deprecated features

The following features have been discontinued in this release:

No discontinued features.

The following features have been deprecated in this release:

No deprecated features.

3 Packaging and documentation

Downloads and documentation for Gupta Team Developer are available on OpenText My Support (<https://support.opentext.com>).

3.1 Packaging and delivery information

The software and documentation for Gupta Team Developer includes:

- TDSetup-7.4.0-x86.exe (32bit Installation program)
- TDSetup-7.4.0-x64.exe (64bit IDE installation program)
- Deploy-7.4.0-x86.exe (32bit deployment installer)
- Deploy-7.4.0-x64.exe (64bit deployment installer)
- TDSamples-7.4.0-x86.exe (32bit samples installer)
- TDSamples-7.4.0-x64.exe (64bit samples installer)
- TD New and Changed Features.pdf
- TD Report Builder New and Changed Features.pdf
- TD Installation Guide.pdf
- TD .NET Projects.pdf
- TD API Reference Guide.pdf
- TD Calling .NET Assemblies.pdf
- TD Connecting SQLWindows Objects to Databases.pdf
- TD Developing with SQLWindows.pdf
- TD Dynamically Load XAML Resource Dictionary.pdf
- TD Guide to Writing Web Service Client Applications.pdf
- TD Introducing Team Developer.pdf
- TD Localizing and Customizing SQLWindows Applications.pdf
- TD Managing Teams and Objects with Team Object Manager.pdf
- TD Moving Dynamic Libraries to NET SAL Libraries.pdf
- TD Named Toolbar Extensions.pdf
- TD NET 64-bit Compilation Support.pdf

- TD New Controls Demonstration.pdf
- TD Progress Bar Alternative for cMeter.pdf
- TD Ribbon Menu.pdf
- TD Team Developer & Web Services.pdf
- TD Using & Extending QuickObjects.pdf
- TD Visual Toolchest Class Library.pdf
- TD Web Reporting Guide.pdf
- TD WPF Container & Controls.pdf
- TD Your First .NET-WPF Application.pdf

3.2 Related documentation

For additional information about Gupta Team Developer, or for supplemental information about related products, refer to the following documents, which are available on OpenText My Support (<https://support.opentext.com>).

- <https://knowledge.opentext.com/knowledge/cs.dll/Open/62171711>

4 Supported environments and compatibility

This section provides details about supported platforms, systems, and versions.


4.1 Supported systems

Processor	x64 Processor, 1.4GHZ or better
Memory	2GB or greater
Operating System	Windows 10, 8.1 Windows Server 2019, 2016, 2012 R2
.NET Framework	4.5+
Databases Win32	SQLBase 12.2, SQLBase 12.1, SQLBase 12.0, SQLBase 11.7, SQLBase 11.6 (using 11.7 drivers) Oracle 11g R2, 12c, 18c, 19c Microsoft SQL Server 2008, 2012, 2014, 2016, 2017 SAP ASE 16.0 (Sybase) Informix 10, 11, 12.1 (32 bit client) OLE DB (32 bit version) ODBC (32 bit version)

Databases Win64	<p>SQLBase 12.2, 12.1, 12.0, 11.7, 11.6 (using 11.7 drivers)</p> <p>Oracle 11g R2, 12c, 18c, 19c</p> <p>Microsoft SQL Server 2008, 2012, 2014, 2016, 2017</p> <p>SAP ASE 16.0 (Sybase)</p> <p>Informix 10, 11, 12.1 (64 bit client)</p> <p>OLE DB (64 bit version)</p> <p>ODBC (64 bit version)</p>
Databases .NET	<p>SQLBase 12.2, 12.1, 12.0, 11.7, 11.6 (using 11.7 drivers)</p> <p>Oracle 11g R2 (32 bit client) connecting to Oracle 10g or 11g</p> <p>Oracle 12c, 18c, 19c</p> <p>Microsoft SQL Server 2008, 2012, 2014, 2016, 2017</p> <p>SAP ASE 16.0 (Sybase)</p> <p>OLE DB (32 bit version)</p> <p>ODBC (32 bit version)</p>
Team Object Manager (TOM)	<p>TOM supports SQLBase databases only.</p> <p>SQLBase 12.2, 12.1, 12.0, 11.7, 11.6 (using 11.7 drivers)</p>

4.2 OpenText product compatibility

The section provides details about which versions of other OpenText products are compatible with this release of Gupta Team Developer 7.4.

 **Note:** For the latest compatibility information for OpenText products, refer to the Compatibility Matrix (<https://knowledge.opentext.com/go/matrix>) on OpenText My Support.

Product name	Version	Notes
OpenText Gupta SQLBase	11.6, 11.7, 12.0, 12.1, 12.2	

OpenText Gupta Report Builder	7.4	
OpenText Gupta Q	1.0.1	

4.3 Language support

Gupta Team Developer is currently localized in the following languages. Additional languages may be available in future releases.

Component	Languages							
	EN	DE	JA	FR	IT	ZH	ES	RU
SQLWindows	B							
.NET Explorer/.NET Explorer (x64)	B							
Connectivity Administrator	B							
DBPipe Server Desktop	B							
Deployer 7.4	B							
Grid Migration Wizard 7.4	B							
Migration Wizard 7.4	B							
Object Nationalizer 7.4	B							
Quick Tabs Migration Wizard 7.4	B							
Report Builder 7.4	B							
Report Designer	B	UI	UI				UI	
Repository Setup Wizard 7.4	B							
SQLTalk Interactive SQL 7.4	B							
SQLTalk Plus 12.2								

UI = user interface only

B = both user interface and online help

5 Fixed issues

This section provides information about past issues that have been fixed in this release.

Key	Summary
TD-20495	The picture control does not allow conditional display in Report Builder
TD-21491	Customer would like to have the 'Find' dialogs combined
TD-23868	Allow changing font size and style in a a VT cListView control
TD-24163	Option in the print dialog for duplex printing
TD-24232	Implement branching and pull in TD source control panel
TD-24269	Allow to put a background image to the MDI via SalPicSet functions
TD-24286	Allow cloning a UDV to a new UDV object
TD-24301	Provide a SalRTF API allowing to set and get the RTF control property "Read-only"
TD-24320	Support EXIF data in TD and Report Builder picture control especially related to image orientation
TD-24383	Allow Zooming of all TD child control in top level window including anchoring feature
TD-24421	Customer would like the ability to programmatically select dates in the Datepicker
TD-24448	Enhancement request: RTF control and Paste from Clipboard
TD-24481	Extension of function SalRibbonAddItem
TD-24571	Provide an MSI installer generator for applications created with TD WIN32
TD-24653	Add Continue statement for Loops in TD
TD-24704	Allow Ribbon Bar class

Key	Summary
TD-24741	Allow Team Developer to add more break groups
TD-24780	WPF - Unable to directly instantiate an object via SalNetCompileAndEvaluate
TD-24843	Request to add SalMenu functions for Tooltip and StatusText
TD-24850	SalFmtFormatDateTime result depend on Windows control panel "Long Time" setting
TD-24973	Allow TIMEOUT setting for the SAL JSON API
TD-24975	Support PNG transparency in Report builder
TD-25034	Create utility tool to update major or minor version embedded in source code for TD.
TD-25054	Request to add max size property To automatically prevent controls from overlapping when resizing larger when using anchoring feature
TD-25090	Control anchoring support for toolbars
TD-25187	Control Anchoring for .NET Applications
TD-25189	Add "for each" loops
TD-25209	Toast Notification/messages remain in the action center even after the application has been closed
TD-25239	Invalid dispatch with xml automation
TD-25244	Vis function VisTblAddRowBitmap() does not work as expected
TD-25255	Focus and Activation / Validation issue in a specific scenario potentially leading to a crash
TD-25256	Request to create SAL function that checks to see if a Tab Page is Enabled or Disabled
TD-25257	Table Window in MDI Flickering depending on the theme used when getting the focus
TD-25258	Memory leak / reference counting issue when pushing a SafeArray containing variants of type object to a .Net assembly method using a custom developed COM INTEROP .NET framework.

Key	Summary
TD-25262	cOutlineListBox.SetItemData()/GetItemData() returns incorrect result when setting negative values
TD-25275	Request to add functionality to have context menu when right click on Grid scroll bar same as in Table window
TD-25310	Request for a SAL function that lets design time menu items and pop up menu items to get deleted during runtime
TD-25316	Compiling application including mtbl.apl causes duplicated symbol error.
TD-25487	Request for a function that moves rows inside a grid
TD-25537	Request to add a flag Resize Yes/No for grid columns to resize items proportional to the table/grid
TD-25538	Request to add new attributes to specify a percentage for each element for resizing both horizontally and vertically
TD-25541	Provide the build option to disable DPI Awareness
TD-25555	Provide a new function SalTabPageHasChild() to determinate from a control HWND the page that holds the control in a TABBAR
TD-25568	Re-evaluate TD limitations on HSTRING and UDV arrays
TD-25629	Problem with DTPicker and disable
TD-25659	Request to add functions to get the next day(not just the current day) from a given date and last day of a month from a given date
TD-25666	Touch Screen Scroll issue
TD-25668	Enhance SalGridDataExportEx()to allow exported GRID data to fit cells contents when exporting to Excel
TD-25684	Remove all references of Web App (WAM AKA JAWS project) in TD documentation i.e.: "cWebDialogBox" class
TD-25688	Provide a way to disable default Tooltips in Grid columns
TD-25693	Application Crashes
TD-25694	OpenSSL - CVE-2021-23839 (+5)

Key	Summary
TD-25716	Update to use the latest version of NuGet packages.
TD-25720	.NET issues with graphs
TD-25724	Problems with resizable windows in TD 7.3.4
TD-25725	VisualToolchest listbox ignores when anchoring feature enabled
TD-25726	Enable hot-key request for RTF format for parity.
TD-25727	German Umlaute gets lost when loading / migrating source to 7.4
TD-25728	ACA does not show child objects if they are created in mdi child windows
TD-25729	Gail (Win32) multiple defects and issues and proposed fixes in GAILBASE.APL
TD-25730	Internal memory has become invalid" error might appear. / or Error: ByRef value type parameter cannot be null
TD-25731	Changing behavior of TD-25270 shows line having field with static text.
TD-25733	ODBC router: Failing to connect to SQLSERVER when using the connection string feature
TD-25734	GAIL: String datatype: whitespaces are removed (in and out)
TD-25735	Gail : Return/out of string=NULL does not work
TD-25736	GAIL APL interface: __Base_Constructor_Overload2 might crash an application due to the assumption the requested assembly is in the current directory
TD-25737	GAIL: Some base C# datatypes do not work while code is generated and other similar datatypes do work
TD-25738	GAIL: Passing and receiving object arrays fails
TD-25739	GAIL: Binary datatypes fail
TD-25740	GAIL: Passing and returning enum types fail
TD-25741	GAIL: Improve Error handling on __Base_Constructor_Overload1 and 2

Key	Summary
TD-25742	.NET Explorer generates wrong code for passing an array of objects
TD-25743	Problems with Anchoring feature
TD-25744	Table/grid column property for no resize
TD-25749	Clicking Messages Tab of Properties window crashes the application
TD-25752	SalJSONSerializeUDV returns an comma instead of a dot for number decimal values
TD-25754	ForEach statement fails to find array reference at runtime
TD-25755	Memory leak when printing
TD-25756	SalZoomWindow and control anchoring not working correctly
TD-25757	SalSetWindowSize in SAM_Create does not affect to anchoring
TD-25758	Request to add a feature to find at runtime if anchoring is enabled or not.
TD-25760	Update embedded SQLBase version to 12.2.2 for TD 7.4
TD-25761	VisFileCopy() failure when copying file without fully qualified path source / destination (in current directory)
TD-25762	SalTblQueryColumnPos reports wrong position
TD-25767	Object Nationalizer is not working for text menu items
TD-25768	Cannot use application built with 7.3.3. Not showing wmf image on report
TD-25769	When creating a .NET form, getting an error thrown - Set connectionid threw an exception
TD-25771	Getting Many Application crashes as we test application
TD-25774	Exported Excel file by SalGridDataExportEx does not have Left Justify property.
TD-25775	Probelm with SalXMLDeserializeUDV last Parameter (nSchema)

Key	Summary
TD-25778	Wrong item focus/position when inserting a new line in the outline
TD-25779	WIN32 Application hang when calling SalXMLDeserializeUDV() in a specific scenario
TD-25781	Incorrect update of the Grid display when changing the size
TD-25782	How to Get Row Count in Grid or Table Windows
TD-25785	Different behaviour with option buttons in Win app and .NET app
TD-25787	Regression in SalStartTrace(), unpredictable subsequent behaviour
TD-25788	ConvertTD needs to keep original file format such as Indented Text format and character encoding.
TD-25790	Find All enhancement request
TD-25792	64-bit Migration Wizard can't migrate 64-bit normal app
TD-25793	ForEach unexpected behaviour on empty dynamic arrays
TD-25798	VisFileAppend() fails when appending file(s)
TD-25799	Incorrect evaluation of Boolean expression with .NET
TD-25800	Allow anchoring for tiled tab bar.
TD-25801	SalNavAssociateChild issue with Controls
TD-25802	CLONE - Report only shows line which includes Input Item but should show 2 lines when using Suppress Line Spacing
TD-25807	SalZoomWindow does not work as expected in some case.
TD-25809	Issue with SAM_AnyEdit
TD-25810	Regression: SalXMLSerializeUDV

TD-25811	Watermark not displaying in ReportBuilder
TD-25812	calculating a value * 100 gives rounded value
TD-25813	Sybase Client 15.7 - Varchar(500) error. Using TD 7.3.4 with Sybase Client 12.5 the problem not happened
TD-25814	Tree control in Nav Bar Pane displays incorrectly
TD-25815	Horizontal Scroll displays with TD 7.4 but not with TD 7.3.4 and below
TD-25816	Object Nationalizer Crashing
TD-25817	Sybase 3.0 and 7.3.4 difference (DateTime/String)
TD-25818	EXE and/or IDE is crashing if a picture is loaded into the picture control
TD-25819	Painting issue only in IDE when scrolling through a complex busy form with many objects in a TABBAR control
TD-25820	Revision number for AssemblyVersion should be less 65533. Use 0 always instead.
TD-25822	SalFileGetDateTime returns incorrect timestamp and returns false when doc is opened in MS word
TD-25823	.NET Options Buttons not behaving correctly after being selected
TD-25824	Add option to SalReportPrintToFile to send generated PDF file to physical printer.
TD-25826	">=" Returning Operand Comparison Error in .NET application
TD-25827	cQuickGraph window does not display the graph in .NET
TD-25828	Error in Grid edit mode
TD-25830	"SalQuit" does not work under message "SAM_SqlError" running in WPF
TD-25831	Report Builder - Conditional Display for watermark does not show formula when opening it for the next time
TD-25833	No focus on data field when pressing ALT-D (Windows mnemonic) and this from Grid cell in edit mode

TD-25834	Incorrect calculation result after fix of TD-25812
TD-25838	Object Nationalizer Grid translation Issue
TD-25839	"Internal memory had become invalid" error when using SalMail to fetch email via IMAP against office365 server
TD-25841	Team Developer Child Grid
TD-25844	Request to add ability to SalNotifyShowToast function that the first parameter of the function should also be able to receive a resource icon, not only a file
TD-25845	A problem occurs in the customer's premise when generating XML string using german anlauts encoding.
TD-25847	SalNumberRound does not work properly with negative values
TD-25852	Ctrl+Key menu shortcuts not working when focus is in gridcell
TD-25858	Checkbox titles are not redrawn
TD-25860	.Net - Controls Disappear on ToolBar when docking\undocking to Parent sides
TD-25861	Issues in exception handling in GAIL Wrapper code
TD-25863	"Incorrect Content-Type: must be textual to extract_string, JSON to extract_json." when POSTING to a SERVICE using SalJSONSerializeUDV/Ex()
TD-25866	Navigating through controls using the TAB key no longer works in a specific scenario
TD-25868	Inability to rethrow an SQLException in a .NET dll
TD-25869	SAM_Validate does not get triggered when using TAB in a GRID cell
TD-25870	ChartType_HorizontalRangeBar does not return hitpoint using cQuickGraph
TD-25871	7.4 BETA III - Problems with SalZoomWindow
TD-25872	Anchoring not working in specific scenarios
TD-25873	Dialog Properties Image does not work correctly
TD-25876	SalFile_Auto Active data test fails with

TD-25882	Delay in Buttons refresh while using Ribbon Bar with SalRibbonSetItemEnabled on SAM_TabChange
TD-25883	After upgrading Windows 10 from 1909 to 20H2, VisDosNetConnect stopped working
TD-25884	SqlConnection for .NET fails to connect to ODBC DB.
TD-25885	Update nuget packages referenced by .NET assemblies
TD-25886	Missing color coding for keywords ForEach, Break and Continue statements.

6 Contact information

OpenText Corporation
275 Frank Tompa Drive
Waterloo, Ontario
Canada, N2L 0A1

OpenText My Support: <https://support.opentext.com>

For more information, visit www.opentext.com

Copyright © 2019 Open Text. All Rights Reserved.

Trademarks owned by Open Text. One or more patents may cover this product. For more information, please visit <https://www.opentext.com/patents>.

Disclaimer

No Warranties and Limitation of Liability

Every effort has been made to ensure the accuracy of the features and techniques presented in this publication. However, Open Text Corporation and its affiliates accept no responsibility and offer no warranty whether expressed or implied, for the accuracy of this publication.