

Migrate TD bases Applications

Migrate SQLBase

Server Migration Any-To-Any

Agenda

- Migrating Servers
 - What is OT-Migrate?
- Migrate Team Developer based applications
- Migrate SQLBase
- Demo
 - Migration Process Step-By-Step

Supported Platforms

Operating systems:

- Windows Server
- Red Hat Enterprise Linux
- Oracle Enterprise Linux
- SUSE Linux Enterprise
- CentOS
- Ubuntu

Any hypervisor, w/ integration for:

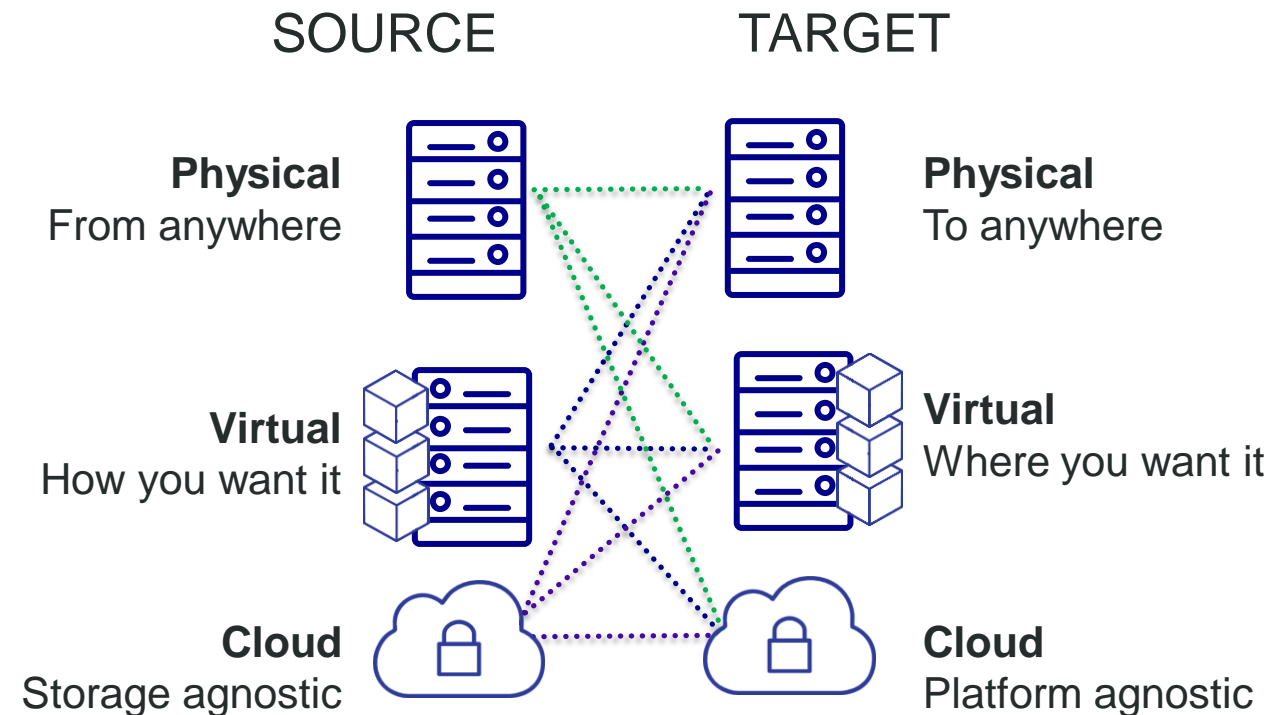
- VMware ESXi and vSphere
- Microsoft Hyper-V

Any cloud, w/ integration for:

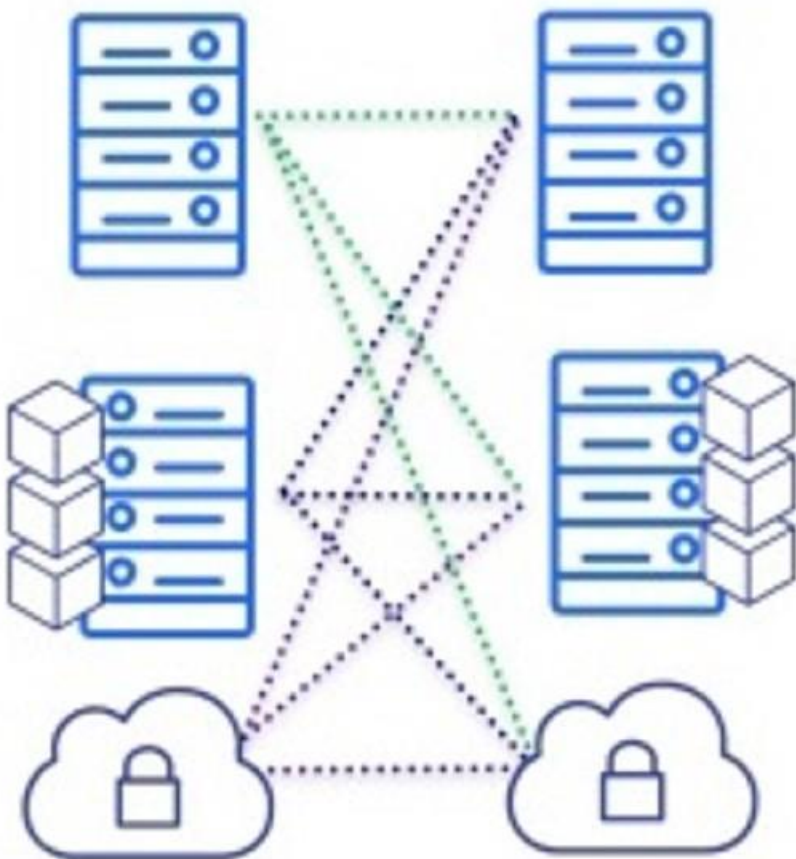
- Microsoft Azure
- Amazon Web Services (AWS)
- VMware vCloud Director

Anywhere to Anywhere

Migrate to/from any platform that can host a supported Windows Server or Linux OS



OpenText Migrate



Saves Money

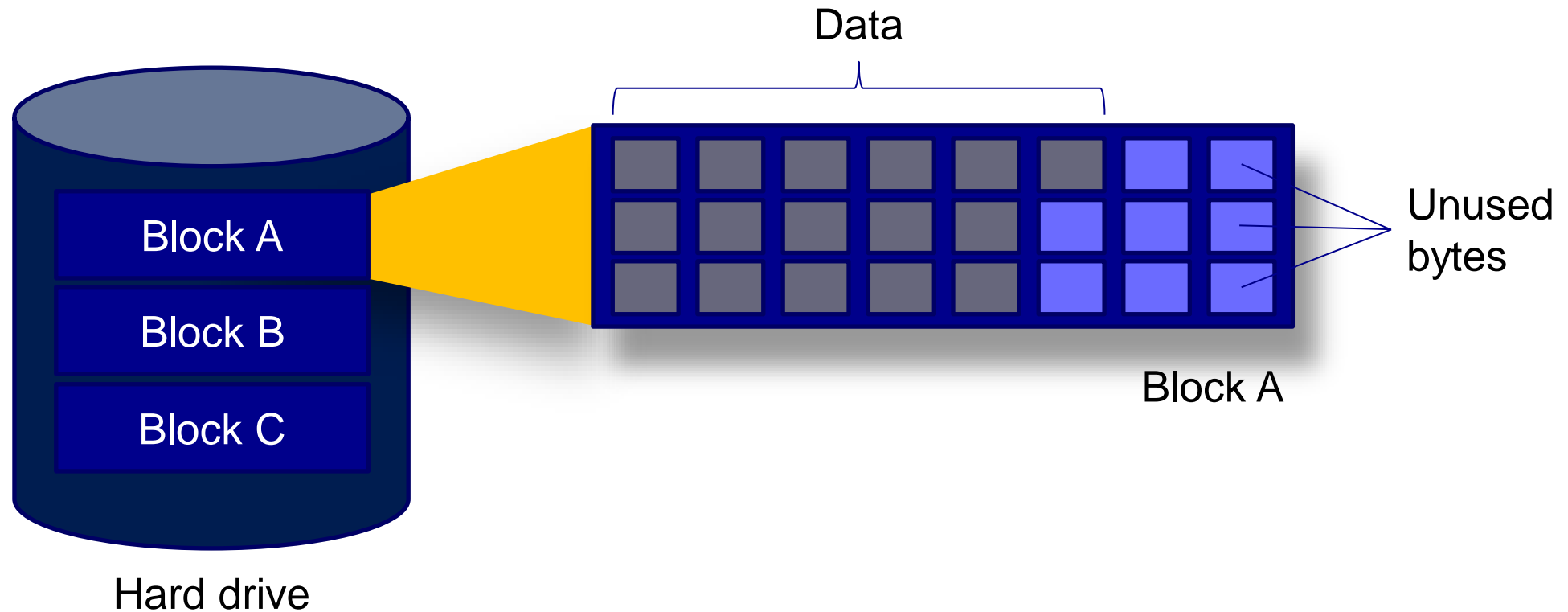


Saves Time

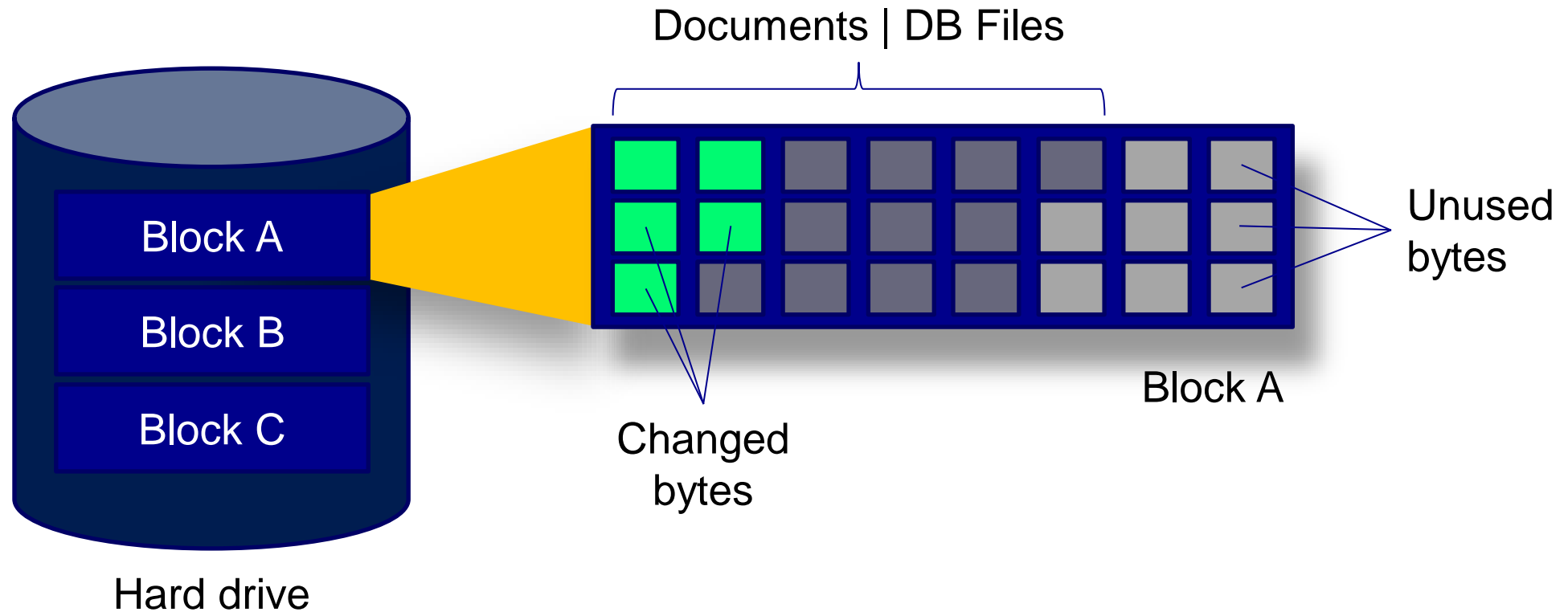


Minimize Risk

OT Migrate – Byte Level Migration

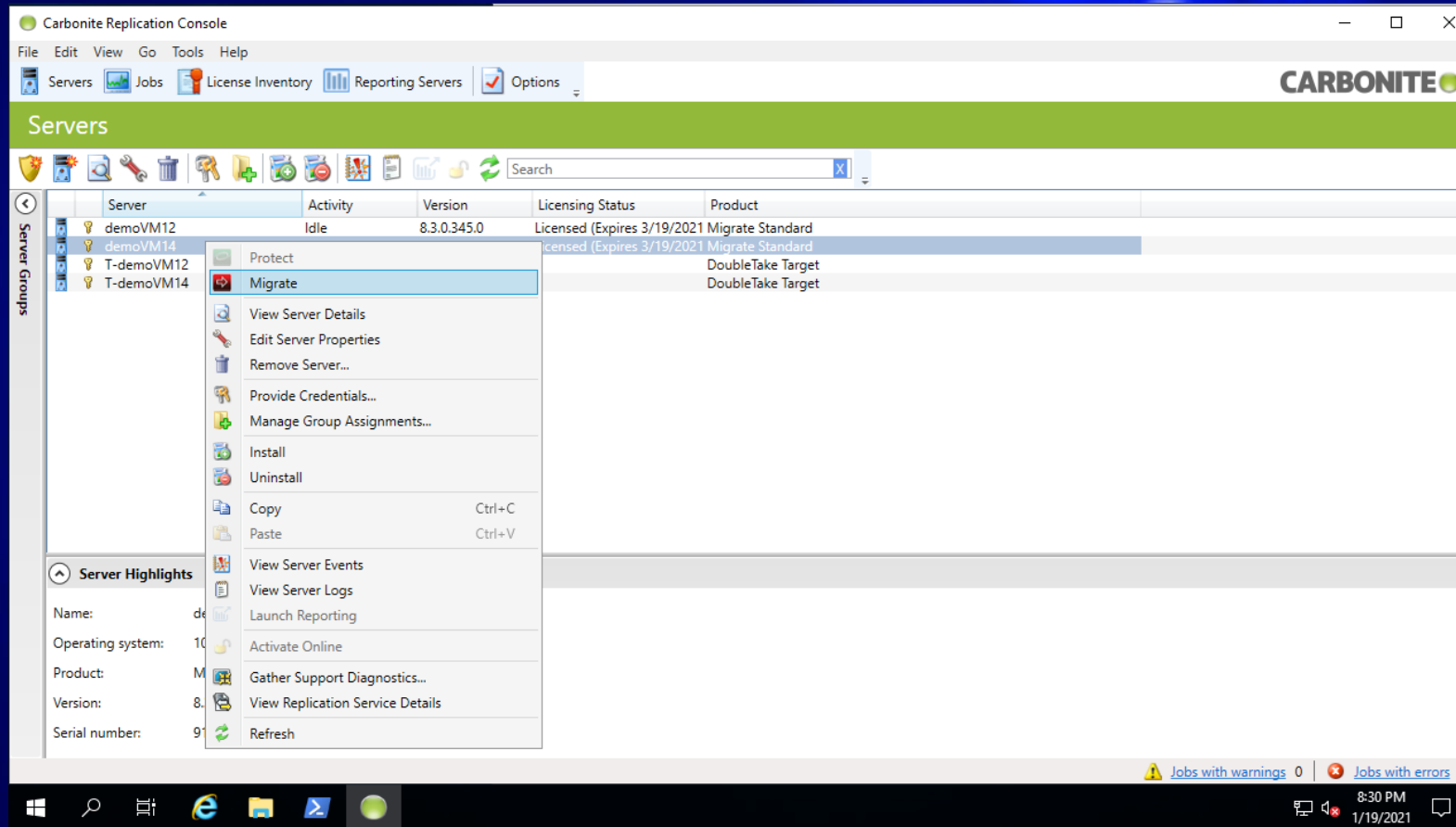


OT Migrate – Byte Level Migration



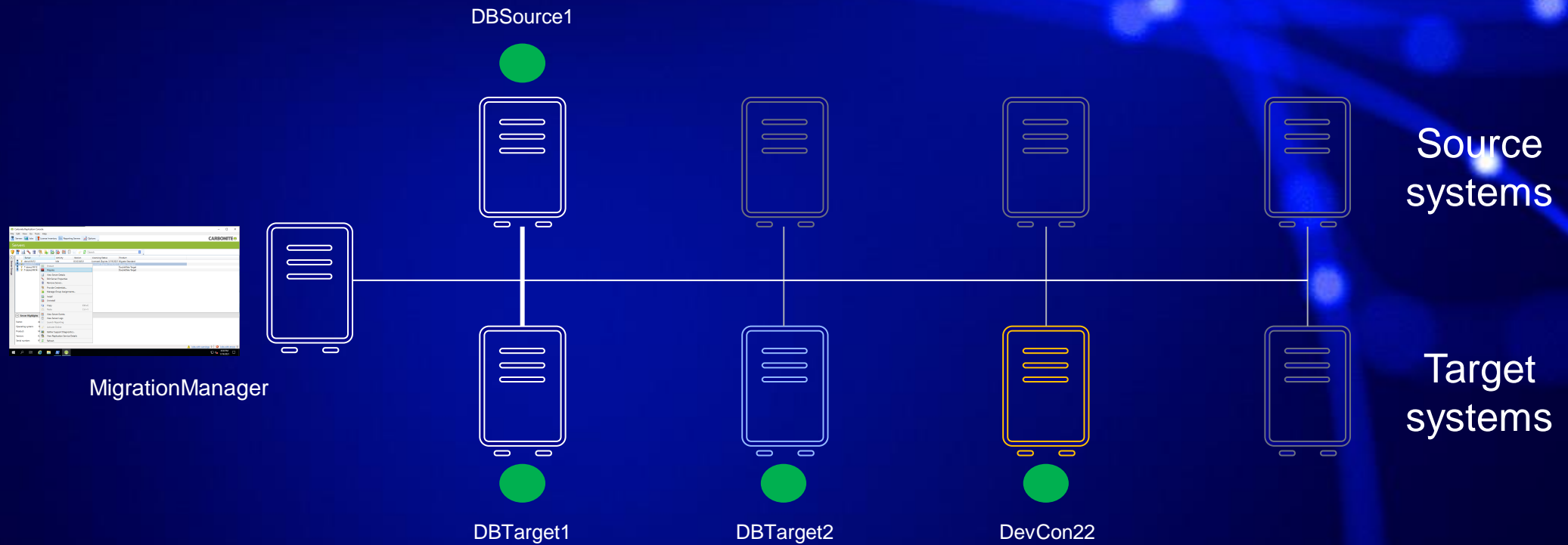
Demo

Opentext Migrate



Demo

Opentext Migrate



Important Hint

- SQLBase Engine on Target Server (Cloud-Server) should not run!
 - Database gets corrupted if OT-Migrate writes directly into an active/running database
- See EULA for SQLBase!
 - Only one instance of SQLBase for a license
- After Cut-Over: Source Server shuts down and Target Server (Cloud-Server) gets IP & Server Name from Source Server
 - No need to change SQL.ini after migration
 - No need to change .NET Provider settings
 - OT-Migration starts the SQLBase after Cut-Over if SQLBase is installed as a service

Important settings are in the *Staging-Folder* which is transferred to the OS during Cut-Over



Q&A

OpenText Migrate

opentext™

Thank you



twitter.com/opentext



linkedin.com/company/opentext

[opentext.com/gupta](https://www.opentext.com/gupta)

More information!

<https://bit.ly/Gupta-TD-free-trial>

<https://www.opentext.com/migrate>